

Was the Mid-Continent Rift part of a successful seafloor-spreading episode?

Carol A. Stein, Department of Earth & Environmental Sciences, University of Illinois at Chicago, Chicago, IL 60607-7059, USA, cstein@uic.edu.

Seth Stein and Miguel Merino, Department of Earth and Planetary Sciences, Northwestern University, Evanston, IL 60208, USA seth@earth.northwestern.edu and miguel@earth.northwestern.edu.

G. Randy Keller, School of Geology and Geophysics, University of Oklahoma, Norman, OK 73019, USA, grkeller@ou.edu.

Lucy M. Flesch, Department of Earth and Atmospheric Sciences, Purdue University, West Lafayette, IN 47906, USA, lmflasch@purdue.edu.

Donna M. Jurdy, Department of Earth and Planetary Sciences, Northwestern University, Evanston, IL 60208, USA, donna@earth.northwestern.edu.

Corresponding author: Carol A. Stein, Department of Earth & Environmental Sciences, University of Illinois at Chicago, Chicago, IL 60607-7059, USA. (cstein@uic.edu)

Abstract:

The ~1.1 Ga Mid-Continent Rift (MCR), the 3000-km long largely-buried feature causing the largest gravity and magnetic anomaly within the North American craton, is traditionally considered a failed rift formed by isolated midplate volcanism and extension. We propose instead that the MCR formed as part of the rifting of Amazonia (Precambrian northeast South America) from Laurentia (Precambrian North America) and became inactive once seafloor spreading was established. A cusp in Laurentia's apparent polar wander path near the onset of MCR volcanism, recorded by the MCR's volcanic rocks, likely reflects the rifting. This scenario is suggested by analogy with younger rifts elsewhere and consistent with the MCR's extension to southwest Alabama along the East Continent Gravity High, southern Appalachian rocks having Amazonian affinities, and recent identification of contemporaneous large igneous provinces in Amazonia.

1. Introduction

One of the most prominent features on gravity and magnetic maps of North America is the Mid-Continent Rift (MCR), a band of buried igneous rocks and associated sediments extending from Lake Superior (Figure 1). These rocks crop out from Minnesota through Wisconsin and the Upper Peninsula of Michigan. To the south the rift is buried by younger sediments, but easily traced because the igneous rocks are dense and strongly magnetized [Hinze *et al.*, 1992; King and Zietz, 1971]. Its west arm extends at least to Oklahoma, and perhaps Texas and New Mexico, via similar-age diffuse volcanism [Adams and Keller, 1996]. The east arm goes through Michigan and extends southward along the Fort Wayne rift and East Continent Gravity High (ECGH) to Alabama [Keller *et al.*, 1982], where gravity and magnetic anomalies are interpreted as indicating mafic rocks [Steltenpohl *et al.*, 2013].

In what tectonic setting the MCR formed remains unclear, despite its prominence. It formed at about 1.109-1.085 Ga within Laurentia, the core of the North American continent assembled in the Precambrian, by volcanism [Davis and Green, 1997; Nicholson *et al.*, 1997] and normal faulting followed by subsidence and sedimentation [Cannon, 1992]. Hence it is commonly viewed as a type example of a failed rift that formed and died within a continental interior, far from its margins, and thus was not associated with a plate boundary or successful rifting/seafloor-spreading event.

2. Microplate formation during continental rifting

A problem with this interpretation is that many, but not all, intracontinental rifts are associated with plate boundary reorganizations (Figure 2). Present-day continental extension in the East African Rift (EAR) and seafloor spreading in the Red Sea and Gulf of Aden form a classic three-arm rift geometry as Africa splits into Nubia, Somalia, and Arabia. GPS and earthquake data show that the opening involves

several microplates between the large Nubian and Somalian plates [*Saria et al.*, 2013]. If the EAR does not evolve to seafloor spreading and dies, in a billion years it would appear as an isolated intracontinental failed rift similar to the MCR.

Another analogy is the West Central African Rift (WCAR) system formed as part of the Mesozoic opening of the South Atlantic. Reconstructing the fit between Africa and South America without overlaps and gaps and matching magnetic anomalies requires microplate motion with up to 95 km extension within continents [*Moulin et al.*, 2010; *Seton et al.*, 2012]. These rifts failed when seafloor spreading initiated along the whole boundary between South America and Africa, illustrating that intracontinental extension can start as part of continental breakup and end when full seafloor spreading is established.

Although similar rift systems existed earlier in the geologic record, it is harder to identify them and establish their history because the plates involved are now widely separated and sometimes experienced subsequent continent-continent collisions that overrode the rifted continental margins. Moreover, the oceanic seafloor with its magnetic reversal record formed after the continents rifted has been lost to subduction.

As just discussed, some active continental rifts with similar lengths to the MCR form boundaries of microplates within the evolving boundary zone between major plates. Similarly, the MCR can be described as part of a microplate's boundary [*Chase and Gilmer*, 1973]. Magma volumes inferred from gravity modeling [*Merino et al.*, 2013] are consistent with the western arm opening mainly by extension and the eastern arm in Michigan as a leaky transform.

3. MCR formation linked to Laurentia/Amazonia Rifting

We hypothesize that the MCR's formation and shutdown was part of the evolution of the plate boundary between Laurentia and neighboring plates. The location and timing of key events relevant to the MCR's evolution fit the known history of plate interactions. Reconstructions based on paleomagnetic data provide a general view of this evolution.

3.1 Cusp in apparent polar wander path at MCR initiation

The late Mesoproterozoic loop in Laurentia's apparent polar wander (APW) path (Figure 3a), often referred to as the Logan Loop, has been interpreted in several ways. The loop was considered to be due to an irregularity in the earth's magnetic field ~1.11 Ga (a reversal asymmetry or non-dipolar field component), but is now thought to reflect a plate tectonic event [Irving, 1979; Halls and Pesonen, 1982]. Volcanic rocks of the MCR provide high-resolution paleomagnetic data for this period and show no asymmetry in the reversals [Swanson-Hysell et al., 2009]. We thus propose that the cusp in Laurentia's APW path reflects plate motion changes due to rifting, in part involving the MCR. Cusps in APW paths have been observed when continents separate and a new ocean forms between the two fragments [e.g. Irving, 1979]. For example, cusps in North America's path coincide with the rifting of Europe from North America and the rifting of Gondwana from Laurasia [Gordon et al., 1984].

We propose that the ~1.11 Ga cusp reflects rifting between Laurentia and Amazonia (Precambrian northeast South America). In some models, Amazonia was in contact with Laurentia ~1.2 Ga [Tohver et al., 2002] (Figure 3b), moved left-laterally until about 1.12 Ga [Tohver et al., 2006], and then separated. These interactions are recorded in the rock record. The absence of igneous rocks younger than ~1.23 Ga in the Llano uplift (Texas) area is interpreted to indicate the end of a subduction episode

[Mosher *et al.*, 2008]. By 1.2 Ga, intracontinental rifting in Amazonia is recorded in the Nova Brasilândia region [Teixeira *et al.*, 2010]. Amazonia's subsequent left lateral motion relative to Laurentia is recorded by deformation in the Ji-Paraná shear network from 1.18-1.12 Ga [Tohver *et al.*, 2006]. The beginning of its separation from Laurentia is indicated by recently dated ~1.110 Ga mafic rocks in Rincón del Tigre and Huanchaca in the SW corner of the Amazon craton [Ernst *et al.*, 2013] and renewed igneous activity in Nova Brasilândia [Teixeira *et al.*, 2010; Tohver *et al.*, 2006].

Because the MCR formed during Amazonia's rifting from Laurentia, we argue that the rifting events are related. Mafic magmatism started north and west of Lake Superior ~1.15 Ga and continued for 40 my [Heaman *et al.*, 2007]. The huge volume of MCR volcanism started in the Lake Superior area at ~1.109 Ga [Davis and Green, 1997], approximately the same time as volcanism within the SW part of the Amazonian craton [Ernst *et al.*, 2013].

3.2 Reconstructions using paleomagnetic data

These events are also spatially related. Paleomagnetic reconstructions (Figure 3b) [D'Agrella-Filho *et al.*, 2008] place SW Amazonia near the southern end of the East Continent Gravity High, an extension of the MCR's eastern arm. Hence the MCR probably connected to the extensional system that separated the two continents (Figure 3b). In this scenario, MCR extension and volcanism ended when motion was taken up by seafloor spreading between Laurentia and Amazonia, rather than ending due to a Grenville collision.

Subsequently,, normal faults in the MCR region were reactivated as reverse faults ~1.06±0.02 Ga [Cannon *et al.*, 1993]. This shortening is assumed to be associated with collisional tectonics during the Grenville orogeny [Soofi and King,

2002], the ~1.3-0.98 Ga assembly of Amazonia and other continents into the supercontinent of Rodinia [Dalziel et al., 2000; Hoffman, 1991; McLelland et al., 2010].

4. Discussion

Our scenario is consistent with the recent recognition that the central and south Appalachians were not part of Laurentia before the Grenville orogeny [Fisher et al., 2010; Loewy et al., 2003; McLelland et al., 2010]. Although Grenville-age Appalachian inlier rocks in the Adirondacks have affinities to Grenville rocks in Canada, most of those to the south are more similar to Amazonia. The latter lack a petrologic signature of the ~1.5-1.3 Ga Granite-Rhyolite province formed within Laurentia, suggesting that they were not part of Laurentia before the Grenville orogeny. The location of Laurentia's eastern margin is obscured by subsequent collisions and thick sedimentation, but we expect that the SE margin would have been south of the southern end of the ECGH.

Our scenario addresses events 1.1 billion years ago, when the geologic record is limited and sparse because many areas are deeply buried, have been eroded, or have been subsequently deformed. Because many aspects of Laurentia – Amazonia rifting and Rodinia's subsequent assembly during the Grenville orogeny remain unresolved, our scenario is schematic. We attribute MCR formation to Laurentia – Amazonia rifting, which – depending on unresolved issues in reconstruction - also may be related to contemporaneous large igneous provinces and possible rifting in the Indian, Congo, and Kalahari cratons [Ernst et al., 2013] recorded by APW path cusps [Gose et al., 2013]. The key feature of our scenario is the relation between the MCR and

continental rifting, which neither requires nor excludes rifting being started by a mantle plume [Nicholson et al., 1997].

In our model, rifting does not result from Grenville collisional events, as sometimes proposed [Gordon and Hempton, 1986]. Instead, the MCR results from rifting during the Grenville at a time when shortening was absent or occurred elsewhere. Probably because of lack of exposure, it is commonly assumed that Grenville-age tectonism along the present U.S. to Mexico margin was similar to that recorded by Grenville-age rocks exposed in Canada. However, this need not have been the case. This margin's length is comparable to that from Turkey to Gibraltar, along which tectonism varied with space and time during the Cenozoic. Similarly, events associated with the formation of the Paleozoic Appalachian-Caledonian mountains differed along the length of the system.

In summary, rather than viewing the largest gravity and magnetic anomaly in the North American craton as an "exotic" feature, we view the MCR's formation and evolution in a plate tectonic context, consistent with what is known of plate motions then and analogous rifting events. Additional data can test this scenario. One promising source is the EarthScope program, which is acquiring new data about lithospheric structure below the MCR [Shen et al., 2013; Stein et al., 2011]. Data across its possible extensions to the south and the Grenville Front will show more about these structures and possible relations between them. Our model suggests that the East Continent Gravity High should appear similar to the MCR, and that there may be additional evidence of the rifted margin between Amazonia and Laurentia.

Acknowledgments:

This work was supported by NSF grants EAR-1148088 and EAR-0952345. C. Stein and S. Stein thank J. Kley and D. Hindle for hospitality at the Georg-August-

Universität Göttingen, where much of the writing was done. S. Stein thanks the Alexander von Humboldt Foundation for supporting his stay. We thank Stephen Gao and John Geissman for helpful reviews.

References:

- Adams, D. C., and G. R. Keller (1996), Precambrian basement geology of the Permian Basin region of West Texas and eastern New Mexico: A geophysical perspective, *AAPG Bull.*, 80(3), 410–431.
- Cannon, W.F. (1992), The Midcontinent rift in the Lake Superior region with emphasis on its geodynamic evolution, *Tectonophysics*, 213, 41–48.
- Cannon, W. F., Z. E. Peterman, P. K. Sims (1993), Crustal-scale thrusting and origin of the Montreal River Monocline- a 35-km-thick cross section of the Midcontinental Rift in northern Michigan and Wisconsin, *Tectonics*, 12(3), 728–744.
- Chase, C. G., T. H. Gilmer (1973), Precambrian plate tectonics: the Midcontinent gravity high, *Earth Planet. Sci. Lett.*, 21, 70–78.
- D’Agrella-Filho, M.S., E. Tohver, J.O.S. Santos, S.-A. Elming, R.I.F. Trindade, I.I.G., Pacca, M.C. Gerales (2008), Direct dating of paleomagnetic result from Precambrian sediments in the Amazon craton: Evidence for Grenvillian emplacement of exotic crust in SE Appalachians of North America, *Earth Planet. Sci. Lett.*, 267, 188–199.
- Dalziel, I. W. D., S. Mosher, L.M. Gahagan (2000), Laurentia-Kalahari collision and the assembly of Rodinia, *J. Geol.*, 108, 499–513.
- Davis, D. W., J. C. Green (1997), Geochronology of the North American Midcontinent rift in western Lake Superior and implications for its geodynamic evolution, *Can. J. Earth Sci.*, 34(4), 476–488, doi:10.1139/e17-039.
- Elming, S.-A., M.S. D’Agrella-Filho, L.M. Page, E. Tohver, R.I.F. Trindade, I.I.G. Pacca, M.C. Gerales (2009), W. Teixeira, A palaeomagnetic and ⁴⁰Ar/³⁹Ar study of late Precambrian sills in the SW part of the Amazonian craton: Amazonia in the Rodinia reconstruction, *Geophys. J. Int.*, 178, 106–122 doi:10.1111/j.1365-246X.2009.04149.x.
- Ernst, R. E., E. Pereira, M.A. Hamilton, S.A. Pisarevsky, J. Rodriques, C.C.G. Tassinari, W. Teixeira, V. Van-Dunem (2013), Mesoproterozoic intraplate magmatic “barcode” record of the Angola portion of the Congo Craton: Newly dated magmatic events at 1505 and 1110 Ma and implications for Nuna (Columbia) supercontinent reconstructions, *Precam. Res.*, 230, 103–118, doi:10.1016/j.precamres.2013.01.010.
- Fisher, C.M., S.L. Loewy, C.F. Miller, P. Berquist, W.R. Van Schumus, R.D. Hatcher Jr., J.L. Wooden, P.D. Fullagar (2010), Whole-rock Pb and Sm-Nd isotopic

- constraints on the growth of southeastern Laurentia during Grenvillian orogenesis, *GSA Bull.*, 122(9/10), 1646-1659, doi:10.1130/B30116.1.
- Gose, W.A., R.E. Hanson, R.E. Harmer, E.K. Seidel (2013), Reconnaissance paleomagnetic studies of Mesoproterozoic alkaline igneous complexes in the Kaapvaal craton, South Africa, *J. African Earth Sci.*, 85, 22–30, doi:10.1016/j.jafrearsci.2013.04.005.
- Gordon, M.B., M.R. Hempton (1986), Collision-induced rifting: The Grenville Orogeny and the Keweenawan Rift of North America, *Tectonophys.*, 127(1-2), 1-25, doi:10.1016/0040-1951(86)90076-4.
- Gordon, R.G., A. Cox, S. O'Hare (1984), Paleomagnetic Euler poles and the apparent polar wander and absolute motion of North America since the Carboniferous, *Tectonics*, 3, 499-537.
- Halls, H. C., L. J. Pesonen (1982), Paleomagnetism of the Keweenawan rocks, in *Geology and Tectonics of the Lake Superior Basin*, Geol. Soc. Am. Mem., 165, editors R. J. Wold, W. J. Hinze, Boulder, CO, pp. 173-202.
- Heaman, L.M., R.M. Easton, T.R. Hart, P. Hollings, C.A. MacDonald, M. Smyk (2007), Further refinement to the timing of Mesoproterozoic magmatism, Lake Nipigon region, Ontario, *Can. J. Earth Sci.*, 44, 1055-1086, doi:10.1139/E06-117.
- Hinze, W. J., D.J. Allen, A.J. Fox, D. Sunwood, T. Woelk, A. Green (1992), Geophysical investigations and crustal structure of the North American Midcontinent rift system, *Tectonophys.*, 213(1-2), 17-32, doi:10.1016/0040-1951(92)90248-5.
- Hoffman, P. F. (1991), Did the breakout of Laurentia turn Gondwanaland inside out?, *Science*, 252, 1409-1412.
- Irving, E. (1979), Paleopoles and paleolatitudes of North America and speculations about displaced terrains, *Canadian Journal of Earth Sciences*, 16, 669-694.
- Keller, G.R., A.E. Bland, J.K. Greenberg (1982), Evidence for a major Late Precambrian tectonic event (rifting?) in the eastern Midcontinent region, United States, *Tectonics*, 1, 213-223.
- King, E.R., I. Zietz (1971), Aeromagnetic study of the midcontinent gravity high of central United States, *Geol. Soc. Am. Bull.*, 82(8), 2187-2208.
- Loewy, S.L., J.N. Connelly, I.W.D. Dalziel, C.F. Gover (2003), Eastern Laurentia in Rodinia: constraints from whole-rock Pb and U/Pb geochronology, *Tectonophys.*, 375, 169-197, doi:10.1016/S0040-1951(03)00338-X.
- McLelland, J. M., B.W. Selleck, M.E. Bickford (2010), Review of the Proterozoic evolution of the Grenville Province, its Adirondack outlier, and the Mesoproterozoic inliers of the Appalachians, in *From Rodinia to Pangea: The lithotectonic record of the Appalachian region*, edited by R.P Tollo, M.J. Bartholomew, J.P. Hibbard, P.M.

- 280 Karabinos, Geol. Soc. Am. Mem., 206, pp. 1-29, Boulder, CO,
281 doi:10.1130/2010.1206(02).
282
- 283 Merino, M., G.R. Keller, S. Stein, C. Stein (2013), Variations in Mid-Continent Rift
284 magma volumes consistent with microplate evolution, *Geophys. Res. Lett.*, *40*, 1513-
285 1516, doi:10.1002/grl.50295.
- 286 Mosher, S., J.S.F. Levine, W.D. Carlson (2008), Mesoproterozoic plate tectonics: a
287 collisional model for the Grenville-aged orogenic belt in the Llano uplift, central
288 Texas, *Geology*, *36*(1), 55-58 doi:10.1130/G24049A.1.
289
- 290 Moulin, M., D. Aslanian, P. Unternehr (2010), A new starting point for the South and
291 Equatorial Atlantic Ocean, *Earth-Science Rev.*, *98*, 1-37.
292
- 293 Nicholson, S. W., S.B. Shirey, K.J. Schulz, J.C. Green (1997), Rift-wide correlation
294 of 1.1 Ga midcontinent rift system basalts: Implications for multiple mantle sources
295 during rift development, *Can. J. Earth Sci.*, *34*(4), 504-520.
296
- 297 Saria, E., E. Calais, Z. Altamimi, P. Willis, H. Farah (2013), A new velocity field for
298 Africa from combined GPS and DORIS space geodetic solutions: contribution to the
299 definition of the African reference frame (AFREF), *J. Geophys. Res.*, *118*, 1677-1697,
300 doi:10.1002/jgrb.50137.
301
- 302 Seton, M., R.D. Muller, S. Zahirovic, C. Gaina, T. Torsvic, G. Shepard, A. Talsma,
303 M. Gurnis, M. Turner, S. Maus, M. Chandler (2012), Global continental and ocean
304 basin reconstructions since 200 Ma, *Earth-Science Rev.*, *113*, 212-270,
305 doi:10.1016/j.earscirev.2012.03.002.
306
- 307 Shen, W., M.H. Ritzwoller, V. Schulte-Pelkum (2013), Crustal and uppermost mantle
308 structure in the central U.S. encompassing the Midcontinent Rift, *J. Geophys. Res.*,
309 *118*, 4325-4344, doi:10.1002/jgrb.50321.
- 310 Soofi, M. A., S.D. King (2002), Post-rift deformation of the Midcontinent rift under
311 Grenville tectonism, *Tectonophysics*, *359*, 209-223.
312
- 313 Stein, S., S. van der Lee, D. Jurdy, C. Stein, D. Wiens, M. Wyssession, J. Revenaugh,
314 A. Frederiksen, F. Darbyshire, T. Bollmann, J. Lodewyk, E. Wolin, M. Merino, and
315 K. Tekverk (2011), Learning from failure: the SPREE Mid-Continent Rift
316 Experiment, *GSA Today*, *21*(9), 5-7, doi:10.1130/G120A.1.
- 317 Steltenpohl, M.G., J.W. Horton, Jr., R. D. Hatcher, Jr., I. Zietz, D.L. Daniels, and
318 M.W. Higgins (2013), Upper crustal structure of Alabama from regional magnetic
319 and gravity data: Using geology to interpret geophysics, and vice versa, *Geosphere*,
320 *9*(4), 1044-1064, doi:10.1130/GES00703.1.
- 321 Swanson-Hysell, N.L., A.C. Maloof, B.P. Weiss, D.A.D. Evans (2009), No
322 asymmetry in geomagnetic reversals recorded by 1.1-billion-year-old Keweenawan
323 basalts, *Nature Geoscience*, *2*, 713-717, doi:10.1038/NGEO622.
324
- 325 Teixeira, W., M.C. Geraldes, R. Matos, A.S. Ruiz, G. Saes, G. Vargas-Mattos (2010),
326 A review of the tectonic evolution of the Sunsás belt, SW Amazonian Craton, *J. So.*

327 *Am. Earth Sci.*, 29, 47-60, doi:10.1016/j.jsames.2009.09.007.
328
329 Tohver, E., B.A. van der tm, R. van der Voo, G. Rizzotto, J.E. Scandolara (2002),
330 Paleogeography of the Amazon craton at 1.2 Ga: Early Grenvillian collision with the
331 Llano segment of Laurentia, *Earth Planet. Sci. Lett.*, 199, 185-200.
332
333 Tohver, E., W. Teixeira, B.A. van der Pluijm, M.C. Geraldes, J.S. Bettencourt, G.
334 Rizzotto (2006), Restored transect across the exhumed Grenville orogen of Laurentia
335 and Amazonia, with implications for crustal architecture, *Geology*, 34(8), 669-672,
336 doi:10.1130/G22534.1.
337
338
339

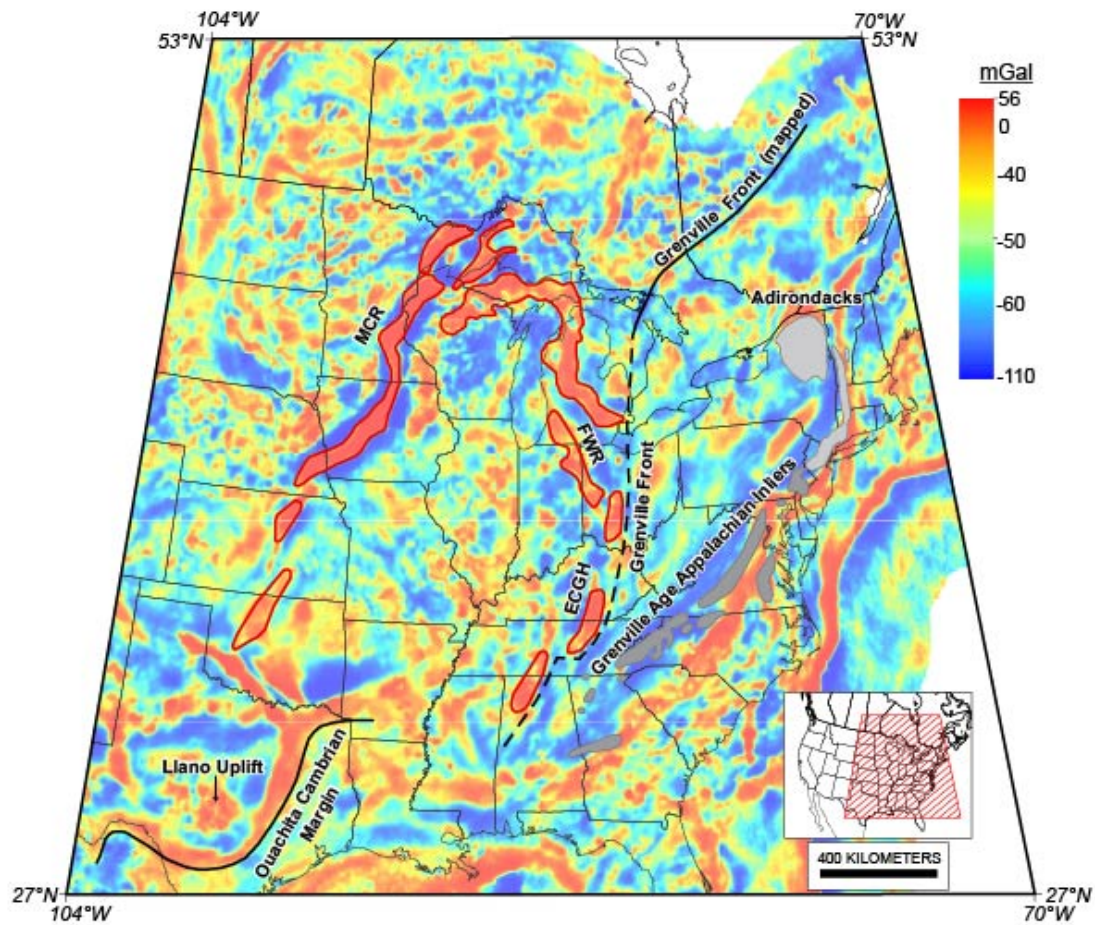


Figure 1. Gravity map showing Midcontinent Rift (MCR), Fort Wayne Rift (FWR), and East Continent Gravity High (ECGH), computed by upward continuing complete Bouguer anomaly (CBA) data to 40 km and subtracting result from CBA (as shown in the supplemental material). Grenville-age Appalachian inliers with Laurentia and Amazonia affinities are shown as light and dark grey regions. Grenville Front shown by solid line where observed and dashed lined where inferred.

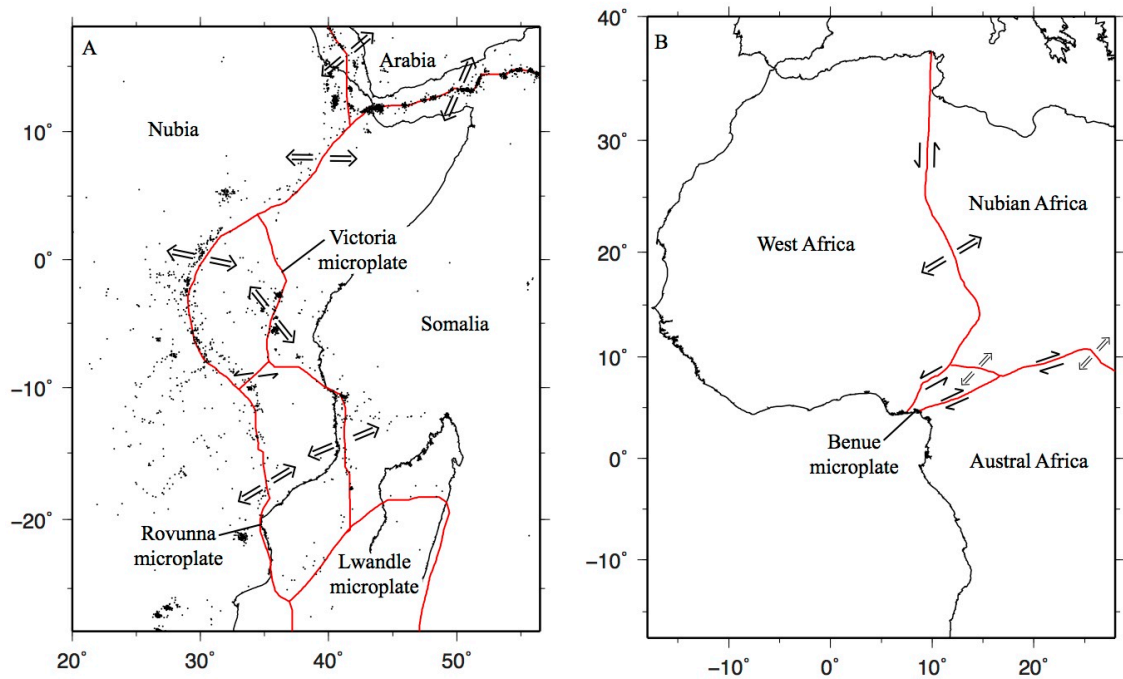


Figure 2. Microplate formation during continental rifting. (a) Present rifting of Africa into three major plates and three microplates, after *Saria et al.* [2013]. (b) Four-microplate geometry of the west central African rift system, formed during the Mesozoic opening of the South Atlantic, after *Moulin et al.* [2010].

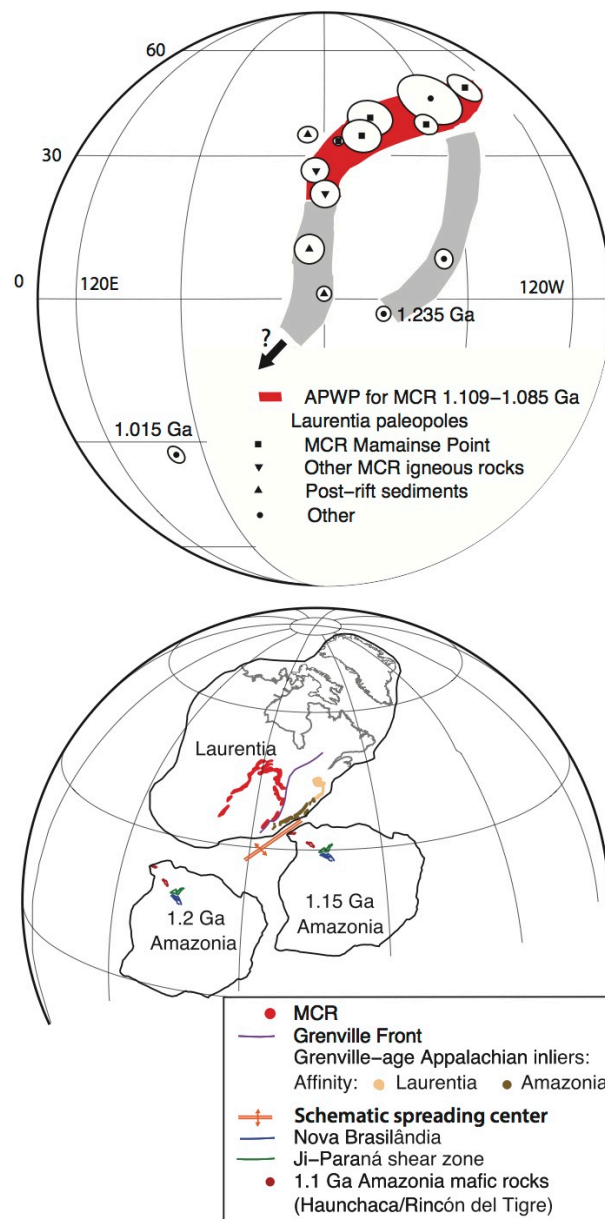


Figure 3. (a) Apparent polar wander path for Laurentia, showing cusp approximately at onset of MCR volcanism (1.109 Ga) that likely reflects the rifting. MCR volcanism interval is shown in red. Poles from *Elming et al.* [2009] and *Swanson-Hysell et al.* [2009]. (b) Reconstruction of plate positions before Laurentia-Amazonia separation, after [D'Agrella-Filho et al., 2008; Elming et al., 2009; Tohver et al., 2002], schematic spreading center geometry, and relevant features. Additional information about the poles is in the supplemental material.

Auxiliary material for:**Was the Mid-Continent Rift part of a successful seafloor-spreading episode?**

Carol A. Stein, Department of Earth & Environmental Sciences, University of Illinois at Chicago, Chicago, IL 60607-7059, USA, cstein@uic.edu.

Seth Stein and Miguel Merino, Department of Earth and Planetary Sciences, Northwestern University, Evanston, IL 60208, USA seth@earth.northwestern.edu and miguel@earth.northwestern.edu.

G. Randy Keller, School of Geology and Geophysics, University of Oklahoma, Norman, OK 73019, USA, grkeller@ou.edu.

Lucy M. Flesch, Department of Earth and Atmospheric Sciences, Purdue University, West Lafayette, IN 47906, USA, lmflesch@purdue.edu.

Donna M. Jurdy, Department of Earth and Planetary Sciences, Northwestern University, Evanston, IL 60208, USA, donna@earth.northwestern.edu.

Geophysical Research Letters**1. Gravity Analysis**

The residual Bouguer anomaly gravity map in Figure 1 in the main text (Figure S3 here) was calculated by upward continuing complete Bouguer anomaly (CBA) data (Figure S1) to 40 km (Figure S2) and subtracting the result point-by-point from the CBA grid. Upward continuation acts as a low pass filter that attenuates shorter wavelength anomalies and so smoothes the data, as demonstrated in Figure S2 [Blakely, 1996]. The gravity highs associated with the Mid-Continent Rift (MCR), Fort Wayne Rift (FWR), and East Continent Gravity High (ECGH) still appear strongly, trending in the same directions as in the CBA map. Subtracting the upward continuation result removes the long wavelength anomalies and hence emphasizes shallower features (Figure S3). The gravity lows associated with the flanking rift are more pronounced, particularly in Michigan [Buening, 2013].

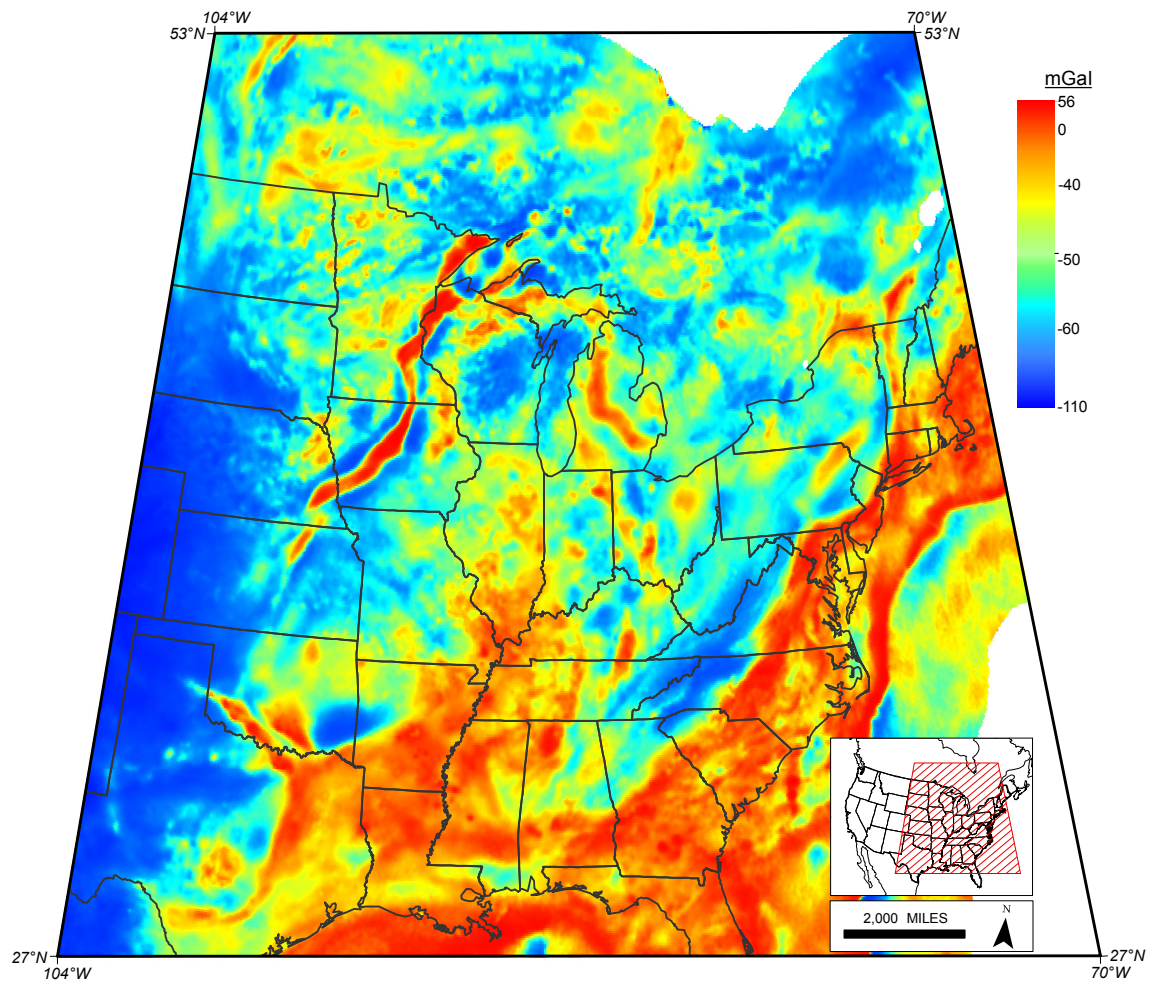


Figure S1. Complete Bouguer gravity anomaly (CBA) for eastern United States.

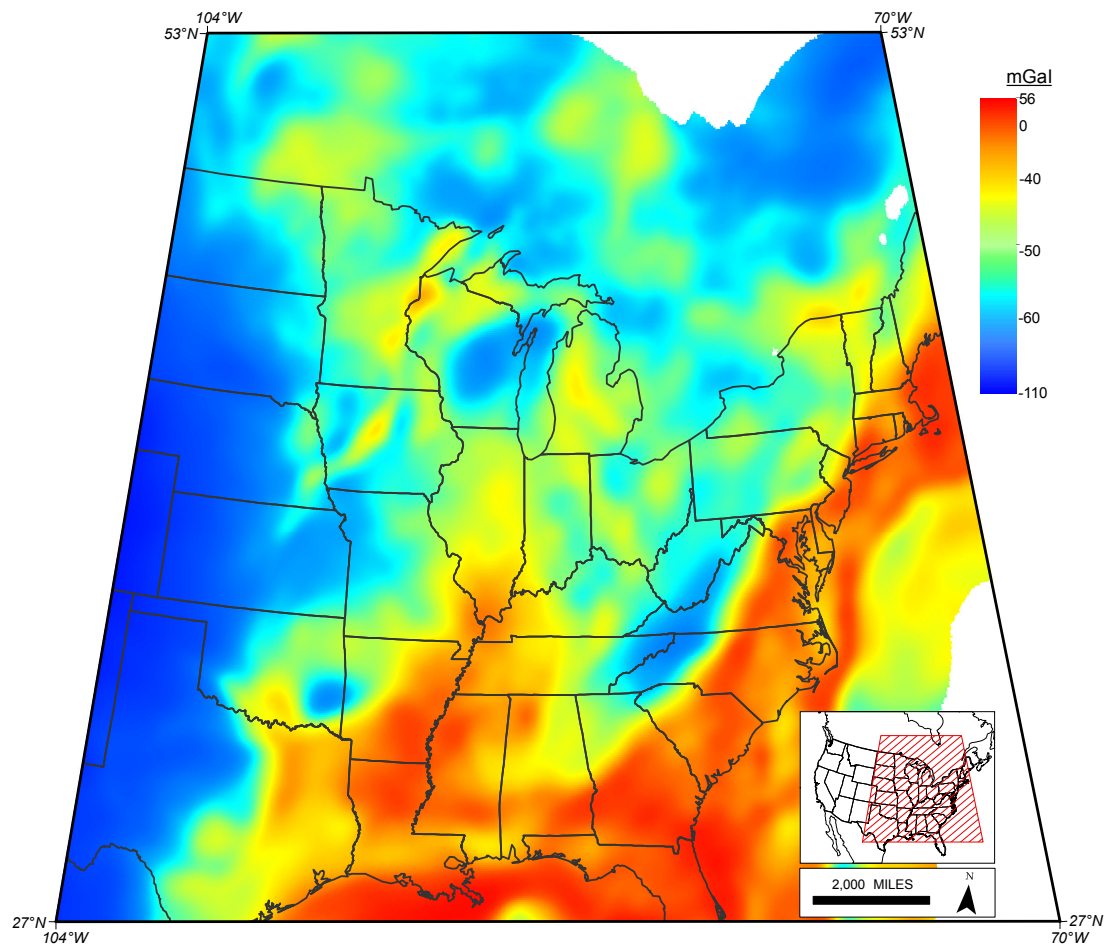


Figure S2. Gravity anomaly upward continued to 40 km.

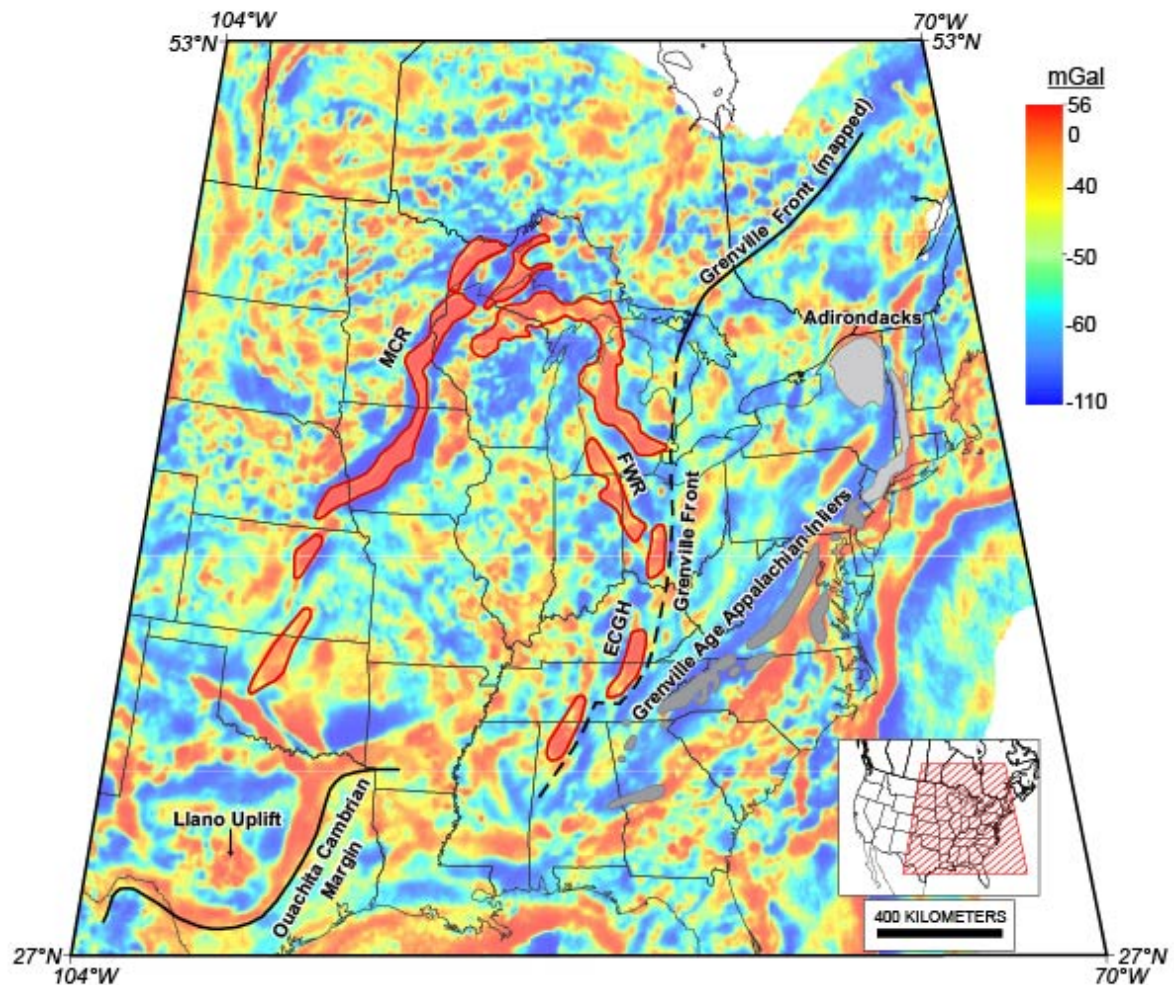


Figure S3. Residual anomaly map (same as Figure 1 in paper) computed by subtracting the 40 km upward continued grid (Figure S2) from the Complete Bouguer Anomaly grid (Figure S1). This process shows features that have a strong expression in the upper crust. Large features appear sharper and smaller scale features are more pronounced. The gap in the ECGH in the northern part of Kentucky at about 38°N is due to the overprinting by the much younger (Cambrian) Rome Trough, an extensional feature [Gao *et al.*, 2000]. Labeled features include the Midcontinent Rift (MCR), Fort Wayne Rift (FWR), and East Continent Gravity High (ECGH), Grenville-age Appalachian inliers with Laurentia and Amazonia affinities are shown as light and dark grey regions. Grenville Front shown by solid line where observed and dashed lined where inferred.

2. Apparent Polar Wander Path

The apparent polar wander path for Laurentia in Figure 3a contains paleomagnetic poles from *Elming et al.* [2009] and *Swanson-Hysell et al.* [2009]. Prior to the formation of the Mid-Continent Rift (MCR) we use the 1.235 Ga pole for the Sudbury Dykes (1, blue), 1.204 Ga Upper Bylot (2, blue), and 1.141 Ga pole for the Abitibi Dykes (3, blue). For the MCR, we primarily use the best-dated sites, those from Mamainse Point (4-8, red) determined by *Swanson-Hysell et al.* [2009]. These dates [<http://www.swanson-hysell.org/research/keweenawan/>] range from about 1.109-1.094 Ga with the exception of one somewhat younger paleopole. We also use two somewhat younger paleopoles from *Swanson-Hysell et al.* [2009] for the ~1.095 Ga Portage Lake Lavas (9, red) and the ~1.087 Ga Lake Shore Traps (10, red).

For the post-rift sediments of the MCR [*Ojakangas et al.*, 2001] we use only those from the Oronto Group (Copper Harbor Conglomerate (oldest, 11 green), Nonesuch Shale (12, green) and Freda Sandstone (youngest, 13 green)). The Copper Harbor Conglomerate pole plots near the igneous MCR path, unlike the two younger formations. *Halls and Palmer* [1981] note that the direction of magnetization of the Copper Harbor sediments is "virtually indistinguishable" from the Portage Lake volcanics and thus may have been reset due to the interlayering volcanic intrusions and/or are of similar age. Thus these sediments may have been deposited during the rift's opening. Because the Bayfield Group near the MCR may be significantly younger than the Oronto Group, we do not use its paleomagnetic pole. The youngest pole shown is for the 1.015 Ga Halliburton Intrusions (14, black).

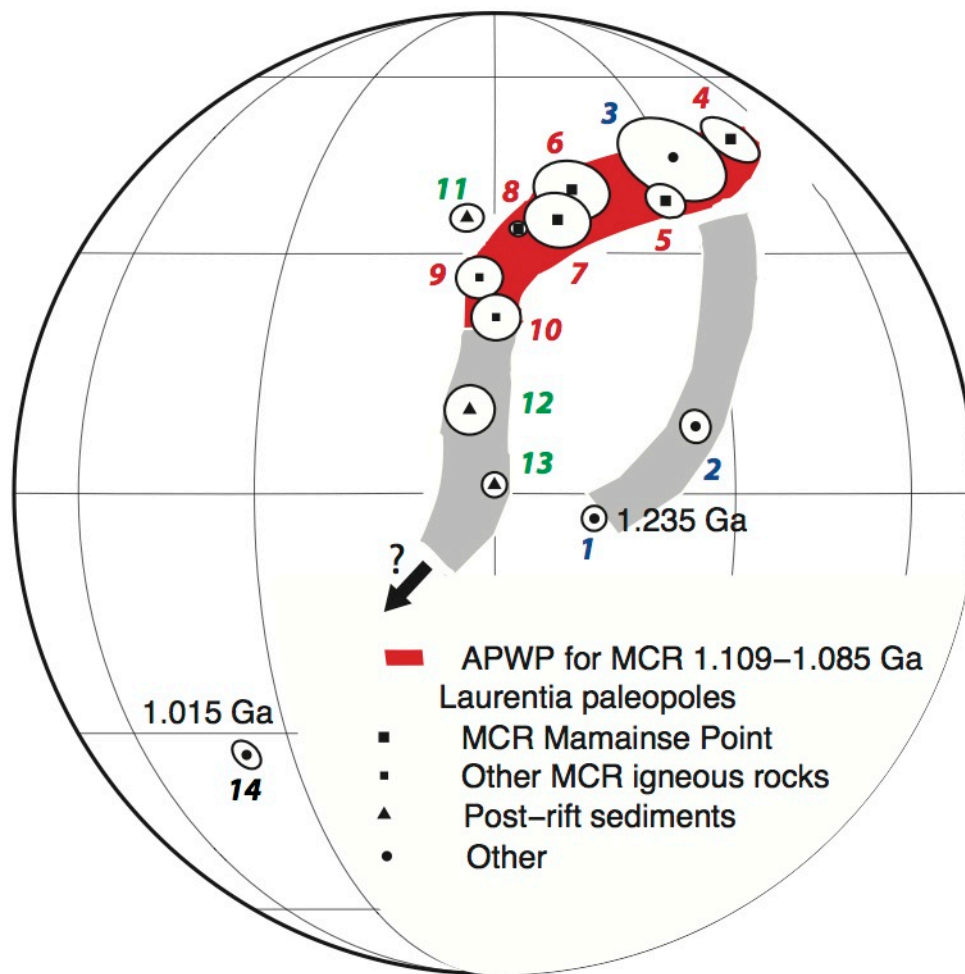


Figure S4- Figure 3a from text with additional information. Apparent polar wander path for Laurentia, showing cusp approximately at onset of MCR volcanism (1.109 Ga) that likely reflects the rifting. Poles from *Elming et al.* [2009] and *Swanson-Hysell et al.* [2009]. 1-3 (blue) before MCR volcanism; 4-10 (red) MCR volcanics, 11-13 (green) mostly post-volcanic MCR sediments, 14 (black) post MCR data. The paleopole for the Copper Harbor Conglomerates (11) most likely reflects syn-rift deposition.

References:

Blakely, R.J. (1996), Potential theory in gravity and magnetic applications: Cambridge, UK, Cambridge University Press, 441 pp.

- 95 Buening, J. D. (2013), An integrated geophysical and geological study of the
96 relationships between the Grenville orogen and Mid-Continent Rift System,
97 University of Oklahoma, Norman, M.S. Thesis, 72 pp.
98
- 99 Elming, S.-A., M.S. D'Agrella-Filho, L.M. Page, E. Tohver, R.I.F. Trindade, I.I.G.
100 Pacca, M.C. Galdes (2009), W. Teixeira, A palaeomagnetic and $^{40}\text{Ar}/^{39}\text{Ar}$ study of
101 late Precambrian sills in the SW part of the Amazonian craton: Amazonia in the
102 Rodinia reconstruction, *Geophys. J. Int.*, 178, 106-122 doi:10.1111/j.1365-
103 246X.2009.04149.x.
104
- 105 Gao, D., R.C. Shumaker, T.H. Wilson (2000), Along-Axis Segmentation and Growth
106 History of the Rome Trough in the Central Appalachian Basin, *AAPG Bulletin*,
107 84(1), 75–99.
108
- 109 Halls, H.C., H. C. Palmer (1981), Remagnetization in Keweenawan rocks. Part II:
110 lava flows within the Copper Harbor Conglomerate, Michigan, *Can. J. Earth Sci.*, 18
111 (9), 1395-1408, doi: 10.1139/e81-131.
112
- 113 Ojakangas, R.W., G.B. Morely, J.C. Green (2001), The Mesoproterozoic
114 Midcontinent Rift System, Lake Superior Region, USA, *Sedimentary Geology*, 141-
115 142, 421-442, 2001.
116
- 117 Swanson-Hysell, N.L., A.C. Maloof, B.P. Weiss, D.A.D. Evans (2009), No
118 asymmetry in geomagnetic reversals recorded by 1.1-billion-year-old Keweenawan
119 basalts, *Nature Geoscience*, 2, 713-717, doi:10.1038/NGEO622.
120
121
122
123