

# The roles of several sensory neurons and the feedback from egg laying in regulating the germline response to a sex pheromone in *C. elegans* hermaphrodites

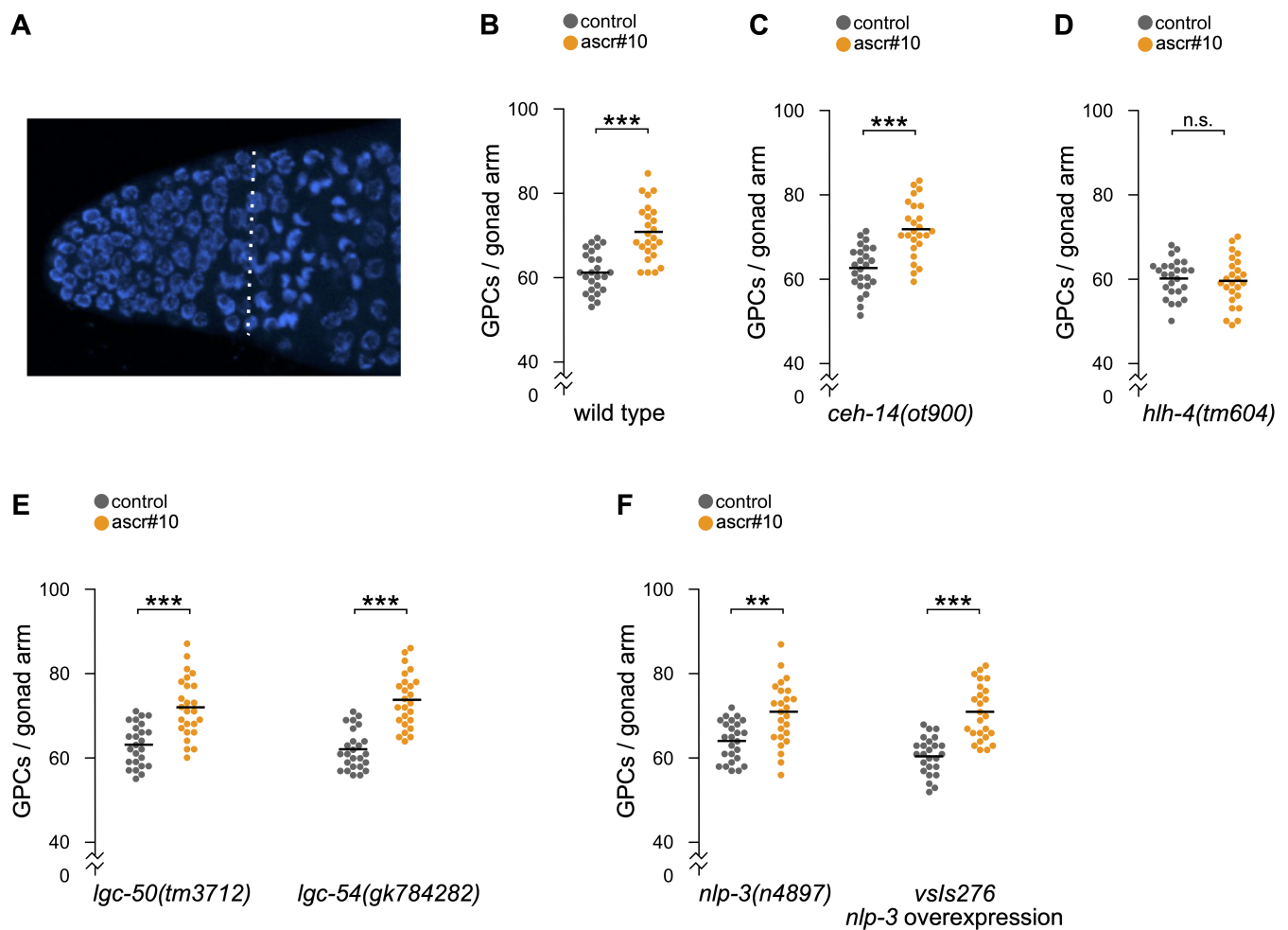
Erin Z. Aprison<sup>1</sup> and Ilya Ruvinsky<sup>1§</sup>

<sup>1</sup>Department of Molecular Biosciences, Northwestern University

<sup>§</sup>To whom correspondence should be addressed: [ilya.ruvinsky@northwestern.edu](mailto:ilya.ruvinsky@northwestern.edu)

## Abstract

Animals broadcast small molecule pheromones that can alter behavior and physiology in conspecifics. Neuronal circuits that regulate these processes remain largely unknown. In *C. elegans*, male-enriched ascaroside sex pheromone *ascr#10*, in addition to behavioral effects, expands the population of germline precursor cells in hermaphrodites. Previously, we identified several sensory neurons required for this effect. We also found that feedback from egg laying acts via serotonergic signaling to license the pheromone response in reproducing adults. Here, using newly available reagents, we confirm and extend several of our previous conclusions: a) the ADL neurons are essential for the *ascr#10* response, b) phasmid neurons (PHA and PHB) are unlikely to be involved in the *ascr#10* response, c) the *mod-1* receptor is the main conduit of the serotonergic feedback from egg laying, and d) serotonin remains the only currently known signal of this feedback. Our findings better define the neuronal circuits that mediate the germline response to the major male pheromone.



**Figure 1. Effects of several mutations affecting neuronal functions on the response of hermaphrodite germline to male pheromone *ascr#10*:** (A) Representative image of a DAPI-stained distal germline of a 5-day old hermaphrodite. Distal to the left, proximal to the right. Nuclei to the left of the vertical dotted line were counted as the germline precursor cell (GPC)

population. (B) Wild type N2 response to *ascr#10* in the germline. In this, as in all subsequent panels, each dot denotes the number of GPCs in one gonad arm of one hermaphrodite; grey dots represent animals on control plates, orange dots represent animals exposed to *ascr#10* starting at 48 hours after release from L1 arrest (after L4/adult transition, but before onset of egg laying) until being tested on Day 5 of adulthood. (C) The germline response of *ceh-14(ot900)* to *ascr#10*. (D) The germline response of *hlh-4(tm604)* to *ascr#10*. (E) The germline response to *ascr#10* of mutants in two recently identified serotonin receptors, *lgc-50(tm3712)* and *lgc-54(gk784282)*. (F) The germline response to *ascr#10* of *nlp-3(n4897)* and *nlp-3* overexpressing strain (*vsIs276*). N=25 for all conditions. Asterisks indicate statistical significance as determined by the Kolmogorov-Smirnov test (\*\*  $p < 0.01$ , \*\*\*  $p < 0.001$ ).

## Description

The distal-most portion of the hermaphrodite germline in *C. elegans* is referred to as the Progenitor Zone (Figure 1A). Most cells in this population are mitotically-cycling germline precursors, but some have progressed as far as the early stages of prophase of meiosis I (Fox *et al.*, 2011). The size of the Progenitor Zone is sensitive to a variety of environmental factors (Hubbard and Schedl, 2019). For example, in the presence of physiological concentrations of *ascr#10*, the most abundant male-enriched excreted ascaroside (Izrayelit *et al.*, 2012), hermaphrodites have an enlarged population of germline precursor cells (Figure 1B; (Aprison and Ruvinsky, 2016)).

Previously, we identified several neurons involved in the germline response to *ascr#10*. Because loss-of-function mutations in *ocr-2* and *osm-9* genes eliminated the germline response, we focused on six pairs of sensory neurons – amphids ADF, ADL, ASH, and AWA and phasmids PHA and PHB – in which expression of these two genes overlaps (Aprison and Ruvinsky, 2017). A recent single cell RNAseq atlas supports the idea of a narrow overlap between expression patterns of *ocr-2* and *osm-9*, identifying PVD as the only additional neuronal type in the overlap (Taylor *et al.*, 2021). In the original study, we focused on amphid neurons because loss of a LIM homeobox gene *ceh-14* did not appear to alter the *ascr#10* response (Aprison and Ruvinsky, 2017). The *ceh-14* gene is thought to be expressed in ~10 (Kagoshima *et al.*, 2013) to ~20 (Taylor *et al.*, 2021) neuronal types, including phasmid sensory neurons PHA and PHB. It was not clear whether the *ceh-14(ch3)* allele tested in our original study (Aprison and Ruvinsky, 2017), caused a complete and stable loss of function. More recently, a new mutant allele *ceh-14(ot900)*, a near complete deletion of the locus, became available (Bayer and Hobert, 2018). Hermaphrodites carrying this allele had the same germline response to *ascr#10* as the wild type animals (Figure 1C), confirming our original conclusion that PHA and PHB neurons are dispensable for the germline response to *ascr#10*.

Of the four pairs of amphid neurons implicated by the *ocr-2/osm-9* overlap (ADF, ADL, ASH, and AWA), our original study focused on ADL because expression of the wild type OCR-2 protein in these, but not in the other three pairs, rescued the *ocr-2(lf)* inability to respond to *ascr#10* (Aprison and Ruvinsky, 2017). To obtain additional evidence for the role of ADL neurons, we tested a loss-of-function mutation in the HLH-4 transcription factor that defines ADL identity (Masoudi *et al.*, 2018). This gene appears to be expressed exclusively in ADL neurons, as judged by a fosmid-based reporter transgene (Masoudi *et al.*, 2018) and the single cell RNAseq atlas (Taylor *et al.*, 2021). *hlh-4(tm604)* animals showed no increase of germline precursor cells in the presence of *ascr#10* (Figure 1D), confirming our original conclusion that ADL neurons are required for the germline response to this male pheromone.

The ability of *ascr#10* to enlarge the population of germline precursor cells is restricted to actively reproducing hermaphrodites because egg laying licenses pheromone response (Aprison and Ruvinsky, 2019b). The feedback of active reproduction involves the serotonin signal from the command motoneurons of egg laying, HSN (Aprison and Ruvinsky, 2019b). Previously, we tested mutants in six genes thought to act as serotonin receptors – *ser-1*, *ser-4*, *ser-5*, *ser-7*, *mod-1*, and *lgc-40* – and found that only one, the inhibitory serotonin-gated chloride channel *mod-1*, is essential for the increase of the number of germline precursors on *ascr#10* (Aprison and Ruvinsky, 2019a). Since then, two additional serotonin receptors have been reported: *lgc-50* that appears to be exclusive for serotonin and *lgc-54* that also responds to dopamine and tyramine (Morud *et al.*, 2021). Hermaphrodites carrying mutations in either of these two genes did not discernibly differ from their wild type counterparts (Figure 1E), further supporting the idea that *mod-1* is the only currently annotated serotonin receptor required for the germline effects of *ascr#10*.

Command motoneurons HSN release serotonin along with neuropeptide NLP-3 to stimulate egg laying episodes (Brewer *et al.*, 2019). Because feedback from egg laying, mediated at least in part by serotonin, is required for increasing the number of germline precursors in the presence of *ascr#10* (Aprison and Ruvinsky, 2019b), we tested whether NLP-3 plays a role in this feedback. We found that neither *nlp-3* loss (*nlp-3(n4897)*), nor overexpression (*nlp-3(vsIs276)*), noticeably affected germline response to *ascr#10* (Figure 1F). These results leave serotonin as the only currently known mediator of the feedback from the egg-laying apparatus that limits the *ascr#10* effects on the germline to actively reproducing animals.

## Methods

[Request a detailed protocol](#)

We used standard *C. elegans* methods as previously published (Aprison and Ruvinsky, 2017, 2019a, b). Briefly, worms were synchronized by hypochlorite treatment and subsequent overnight incubation in M9, after which the synchronized L1 larvae were placed (in groups of ~30) on agar plates seeded with *E. coli* OP50. 48 hours later, when worms were young, but pre-reproductive adults, they were transferred to OP50-seeded plates that were either control or conditioned with synthetic ascr#10 (gift of F. C. Schroeder). This protocol ensured that all experiments were paired with a control. On Day 5 of adulthood, hermaphrodites were stained with DAPI (4',6-diamidino-2-phenylindole) as described (Aprison and Ruvinsky, 2016) and the germline precursor cells were counted. The boundary between the germline precursor population and the more proximal transition zone is defined by the appearance of crescent-shaped nuclei that have progressed to leptotene/zygotene stages of meiotic prophase (Crittenden *et al.*, 2006; Hansen *et al.*, 2004). Additional protocol details are available upon request.

## Reagents

Strain	Genotype	Obtained from
N2	wild type	CGC
OH15422	<i>ceh-14(ot900)</i>	CGC
OH16755	<i>hlh-4(tm604)</i>	Hobert lab
AQ4347	<i>lgc-50(tm3712)</i>	Morud lab
AQ4493	<i>lgc-54(gk784282)</i>	Morud lab
LX2388	<i>nlp-3(n4897)</i>	Koelle lab
LX2518	<i>vsIs276 (nlp-3 overexpression)</i>	Koelle lab

**Acknowledgments:** We thank R. Morimoto for generous hospitality; O. Hobert, J. Morud, and M. Koelle for sharing strains; and F. Schroeder for ascarosides. We derived some information from Wormbase; it is supported by grant U41 HG002223 from the National Human Genome Research Institute at the NIH, the UK Medical Research Council, and the UK Biotechnology and Biological Sciences Research Council. Several *C. elegans* strains were obtained from the Caenorhabditis Genetics Center (CGC) (Minneapolis, MN, USA) which is funded by NIH Office of Research Infrastructure Programs (P40 OD010440).

## References

- Aprison EZ, Ruvinsky I. 2019. Coordinated Behavioral and Physiological Responses to a Social Signal Are Regulated by a Shared Neuronal Circuit. *Curr Biol* 29: 4108-4115.e4. PMID: 31708394.
- Aprison EZ, Ruvinsky I. 2019. Dynamic Regulation of Adult-Specific Functions of the Nervous System by Signaling from the Reproductive System. *Curr Biol* 29: 4116-4123.e3. PMID: 31708396.
- Aprison EZ, Ruvinsky I. 2017. Counteracting Ascarosides Act through Distinct Neurons to Determine the Sexual Identity of *C. elegans* Pheromones. *Curr Biol* 27: 2589-2599.e3. PMID: 28844646.
- Aprison EZ, Ruvinsky I. 2016. Sexually Antagonistic Male Signals Manipulate Germline and Soma of *C. elegans* Hermaphrodites. *Curr Biol* 26: 2827-2833. PMID: 27618262.
- Bayer E, Hobert O. 2018. A novel null allele of *C. elegans* gene *ceh-14*. *microPublication Biology* 10.17912/g434-3d85. PMID: 32550390.
- Brewer JC, Olson AC, Collins KM, Koelle MR. 2019. Serotonin and neuropeptides are both released by the HSN command neuron to initiate *Caenorhabditis elegans* egg laying. *PLoS Genet* 15: e1007896. PMID: 30677018.
- Crittenden SL, Leonhard KA, Byrd DT, Kimble J. 2006. Cellular analyses of the mitotic region in the *Caenorhabditis elegans* adult germ line. *Mol Biol Cell* 17: 3051-61. PMID: 16672375.
- Fox PM, Vought VE, Hanazawa M, Lee MH, Maine EM, Schedl T. 2011. Cyclin E and CDK-2 regulate proliferative cell fate and cell cycle progression in the *C. elegans* germline. *Development* 138: 2223-34. PMID: 21558371.
- Hansen D, Hubbard EJ, Schedl T. 2004. Multi-pathway control of the proliferation versus meiotic development decision in the *Caenorhabditis elegans* germline. *Dev Biol* 268: 342-57. PMID: 15063172.

Hubbard EJA, Schedl T. 2019. Biology of the *Caenorhabditis elegans* Germline Stem Cell System. *Genetics* 213: 1145-1188. PMID: 31796552.

Izrayelit Y, Srinivasan J, Campbell SL, Jo Y, von Reuss SH, Genoff MC, Sternberg PW, Schroeder FC. 2012. Targeted metabolomics reveals a male pheromone and sex-specific ascaroside biosynthesis in *Caenorhabditis elegans*. *ACS Chem Biol* 7: 1321-5. PMID: 22662967.

Kagoshima H, Cassata G, Tong YG, Pujol N, Niklaus G, Bürglin TR. 2013. The LIM homeobox gene *ceh-14* is required for phasmid function and neurite outgrowth. *Dev Biol* 380: 314-23. PMID: 23608457.

Masoudi N, Tavazoie S, Glenwinkel L, Ryu L, Kim K, Hobert O. 2018. Unconventional function of an Achaete-Scute homolog as a terminal selector of nociceptive neuron identity. *PLoS Biol* 16: e2004979. PMID: 29672507.

Morud J, Hardege I, Liu H, Wu T, Choi MK, Basu S, Zhang Y, Schafer WR. 2021. Deorphanization of novel biogenic amine-gated ion channels identifies a new serotonin receptor for learning. *Curr Biol* 31: 4282-4292.e6. PMID: 34388373.

Taylor SR, Santpere G, Weinreb A, Barrett A, Reilly MB, Xu C, Varol E, Oikonomou P, Glenwinkel L, McWhirter R, Poff A, Basavaraju M, Rafi I, Yemini E, Cook SJ, Abrams A, Vidal B, Cros C, Tavazoie S, Sestan N, Hammarlund M, Hobert O, Miller DM 3rd. 2021. Molecular topography of an entire nervous system. *Cell* 184: 4329-4347.e23. PMID: 34237253.

**Funding:** This work was funded in part by the NIH (R01GM126125) grant to I.R.

**Author Contributions:** Erin Z. Aprison: Conceptualization, Data curation, Formal analysis, Investigation, Methodology, Validation, Visualization, Writing - original draft. Ilya Ruvinsky: Conceptualization, Data curation, Formal analysis, Funding acquisition, Project administration, Supervision, Writing - original draft.

**Reviewed By:** Ariz Mohammad and Anonymous

**History:** Received December 3, 2021 **Revision received** January 25, 2022 **Accepted** January 30, 2022 **Published** February 2, 2022

**Copyright:** © 2022 by the authors. This is an open-access article distributed under the terms of the Creative Commons Attribution 4.0 International (CC BY 4.0) License, which permits unrestricted use, distribution, and reproduction in any medium, provided the original author and source are credited.

**Citation:** Aprison, EZ; Ruvinsky, I (2022). The roles of several sensory neurons and the feedback from egg laying in regulating the germline response to a sex pheromone in *C. elegans* hermaphrodites. *microPublication Biology*. <https://doi.org/10.17912/micropub.biology.000523>