

# COVID19 Flight Cancellations

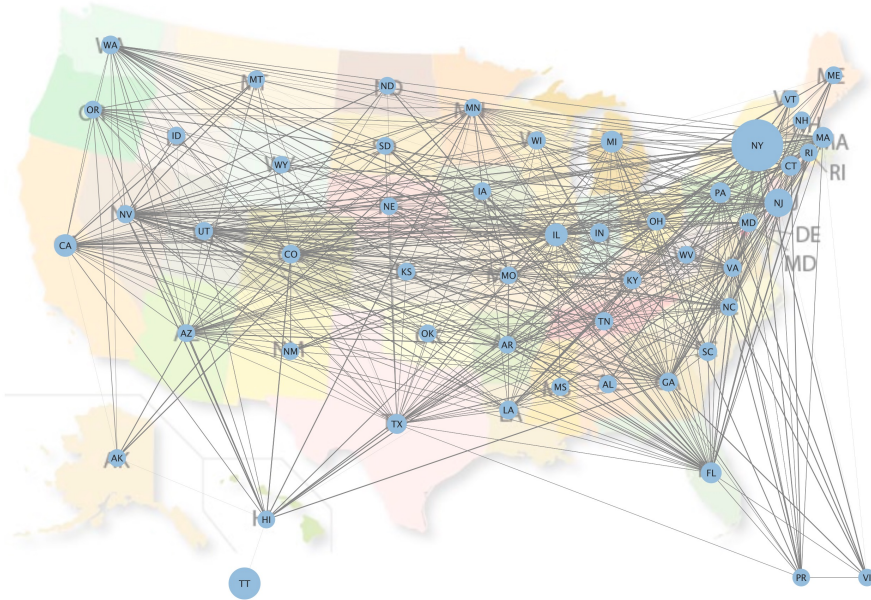
Yian Ann Xu  
Department of Physics and Astronomy  
Northwestern University

PHY465 final project

**Question:** correlation between flight cancellations and number of cases during early COVID19.

## Why Do We Care

- global/local large-scale pandemics occurs repeatedly in human history;
- COVID19 is one of the most severe pandemics after globalization.
- Potential guidance on appropriate pandemic measure for long-distance.



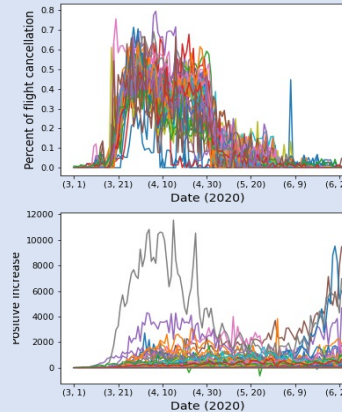
## Network Snapshot (March 29)

- 52 states/territories
- Node size scaled with covid increase;
- Link thickness scaled with fraction of flights cancelled.

## Data (March 1 – June 30; 52 states/territories)

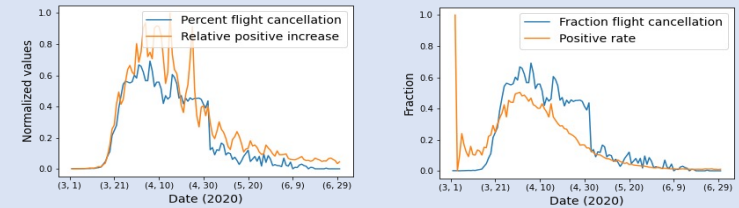
- Nodes – states
  - date, state; positive increase, total results increase
  - → positive rate
- Links – flight cancellations, weighted with percent of flights cancelled
  - ~2.5M flights
  - date, departure state, arrival state;
  - cancelled → total counts + cancelled → fraction canceled

## Empirical Results



**Figure 1** Empirical data visualization. Each line corresponds to a state/territory. **x-axis:** date (month, day) in 2020. **Top panel:** fraction of incoming flight cancellation; **Bottom left:** number of positive increase; **Bottom right:** Positive rate = positive results / total results (in the given date).

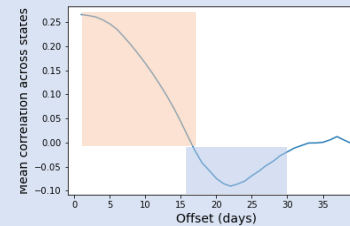
## Results Example



**Figure 2** New York state COVID and flight cancellation. **x-axis:** date (month, day) in 2020

- The two panels shows two different measures of the covid situation.
- **Orange → blue:** strong positive correlation – increase in covid cases immediately lead to flight cancellations
- **Blue → orange:** delayed negative correlation – increase in flight cancellations lead to relief of covid, but with a time delay

## Correlations



**Figure 3** Correlation between covid19 case increase and flight cancellations with various time delays. **x axis:** time offset from 0 to 40 days. **y axis:** mean correlation across states.

- **Small offset (orange):** positive correlation – covid leads to flight cancellations;
- **Larger offset (blue):** negative correlation – flight cancellation leads to relief of covid with a time delay. This agrees with the qualitative results.