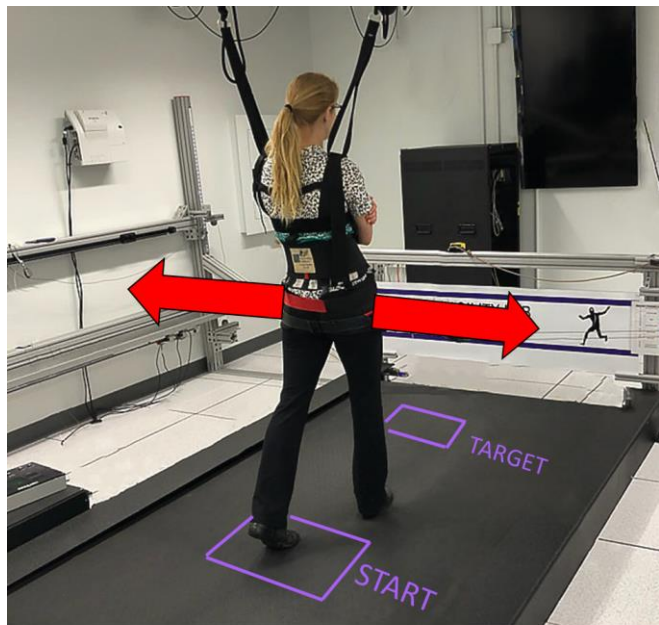


Healthy Volunteers Wanted!



The study will last 2 hours and is located on the downtown Chicago campus:
Northwestern University's Department of Physical Therapy and Human Movement Sciences
645 N. Michigan Ave., Suite 1100, Chicago

If interested, please fill out the form at <https://forms.office.com/r/LW39TQd1ab> (or scan the QR code to the right→)

If you have any questions, email:
Francis Grover, PhD
francis.grover@northwestern.edu

Study title: Impedance Modulation during Gait
Principal Investigator: Keith Gordon, PhD
IRB STU# STU00213809

Are you:

- 18 to 50 years old
- 110 to 240 pounds
- 5'2 to 6'2
- Able to walk for 30 minutes
- Free of injuries that affect balance

If so, you are eligible to participate in a research study to understand how people balance while walking.

As a participant you will:

- Receive \$20
- Get to experience state-of-the-art rehabilitation-robotics technology
- Help advance our understanding of human agility.



francis.grover@northwestern.edu

forms.office.com/r/LW39TQd1ab

francis.grover@northwestern.edu

forms.office.com/r/LW39TQd1ab

francis.grover@northwestern.edu

forms.office.com/r/LW39TQd1ab

francis.grover@northwestern.edu

forms.office.com/r/LW39TQd1ab

francis.grover@northwestern.edu

forms.office.com/r/LW39TQd1ab

francis.grover@northwestern.edu

forms.office.com/r/LW39TQd1ab

francis.grover@northwestern.edu

forms.office.com/r/LW39TQd1ab

francis.grover@northwestern.edu

forms.office.com/r/LW39TQd1ab

francis.grover@northwestern.edu

forms.office.com/r/LW39TQd1ab

francis.grover@northwestern.edu

forms.office.com/r/LW39TQd1ab

forms.office.com/r/LW39TQd1ab